

Epistemic Mobilities and the Governance of Environmental Risks in Island Southeast Asia

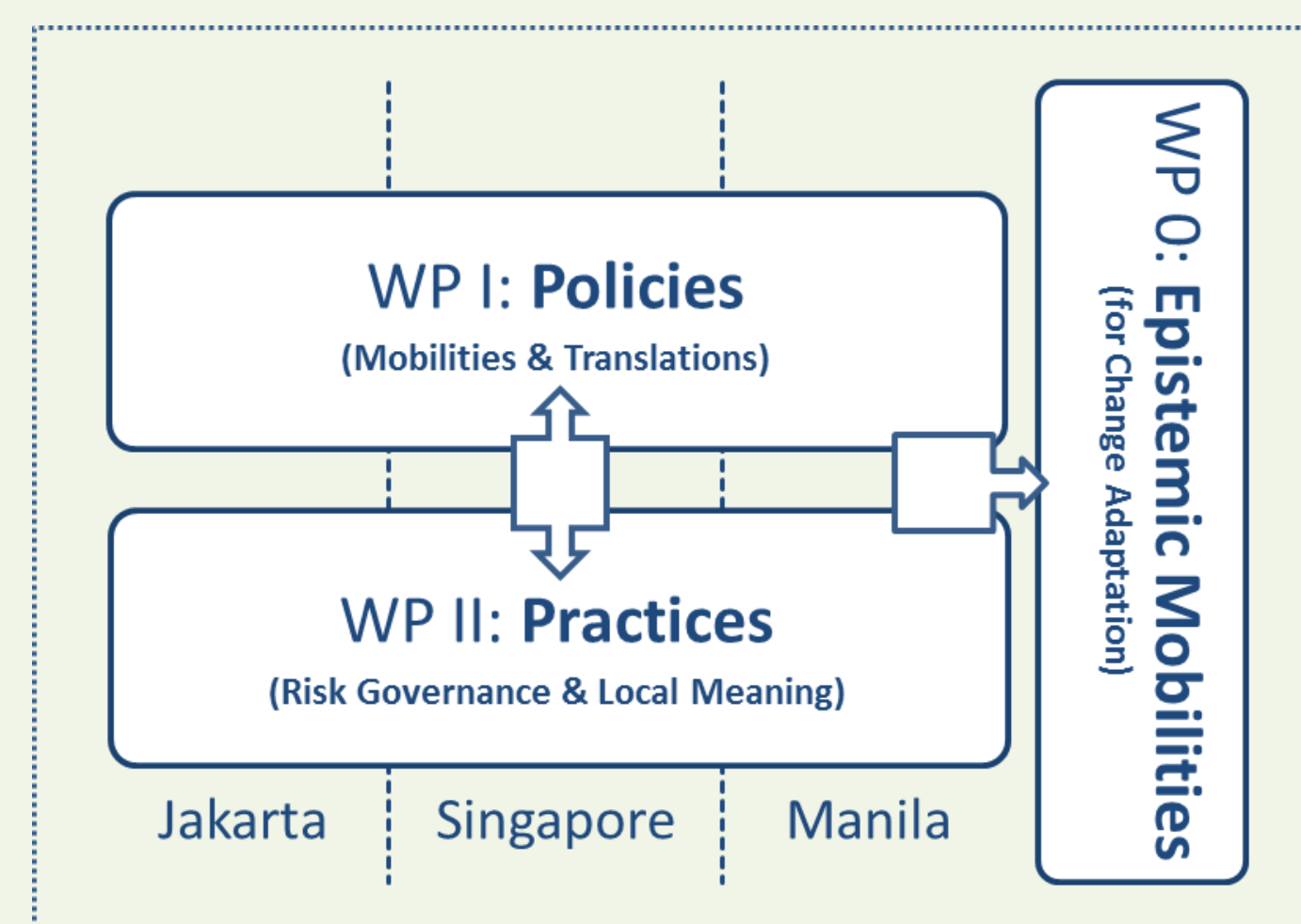
Prof. Dr. Anna-Katharina Hornidge, Leibniz-Center for Tropical Marine Ecology & University of Bremen
Prof. Dr. Michael Flitner, artec Sustainability Research Center, University of Bremen

Travelling Policies and Practices for living with Sea level Rise

Research Focus: Patterns of **epistemic (im-)mobilities** related to sea level rise and the **contestation processes** that **define them** in and between the cities of Singapore, Jakarta and Manila.

Research Question: How are **policies and (standardised) practices** for living with the effects of sea level rise **communicated** by international donors and civil society organisations, and taken up, **translated into local contexts**, politically legitimised and at times **recirculated internationally** by local actors, thus **shaping localised anticipatory learning trajectories** for change adaptation?

Empirical Focus & Analytical Synthesis



What are Epistemic Mobilities?

Policies and practices aiming at the mitigation of and adaptation to the effects of sea level rise are **highly mobile stocks of knowledge - across world regions, scale levels** (global, regional, national, local), **socio-cultural and political contexts**.

Originally developed in particular local contexts, eventually **communicated globally, taken up** elsewhere, **adjusted**, developed further, **or silenced** and **made immobile**, these policies and practices are **exemplary for social learning and political contestation processes** at the interface of global climate politics and local, everyday forms of living with nature.

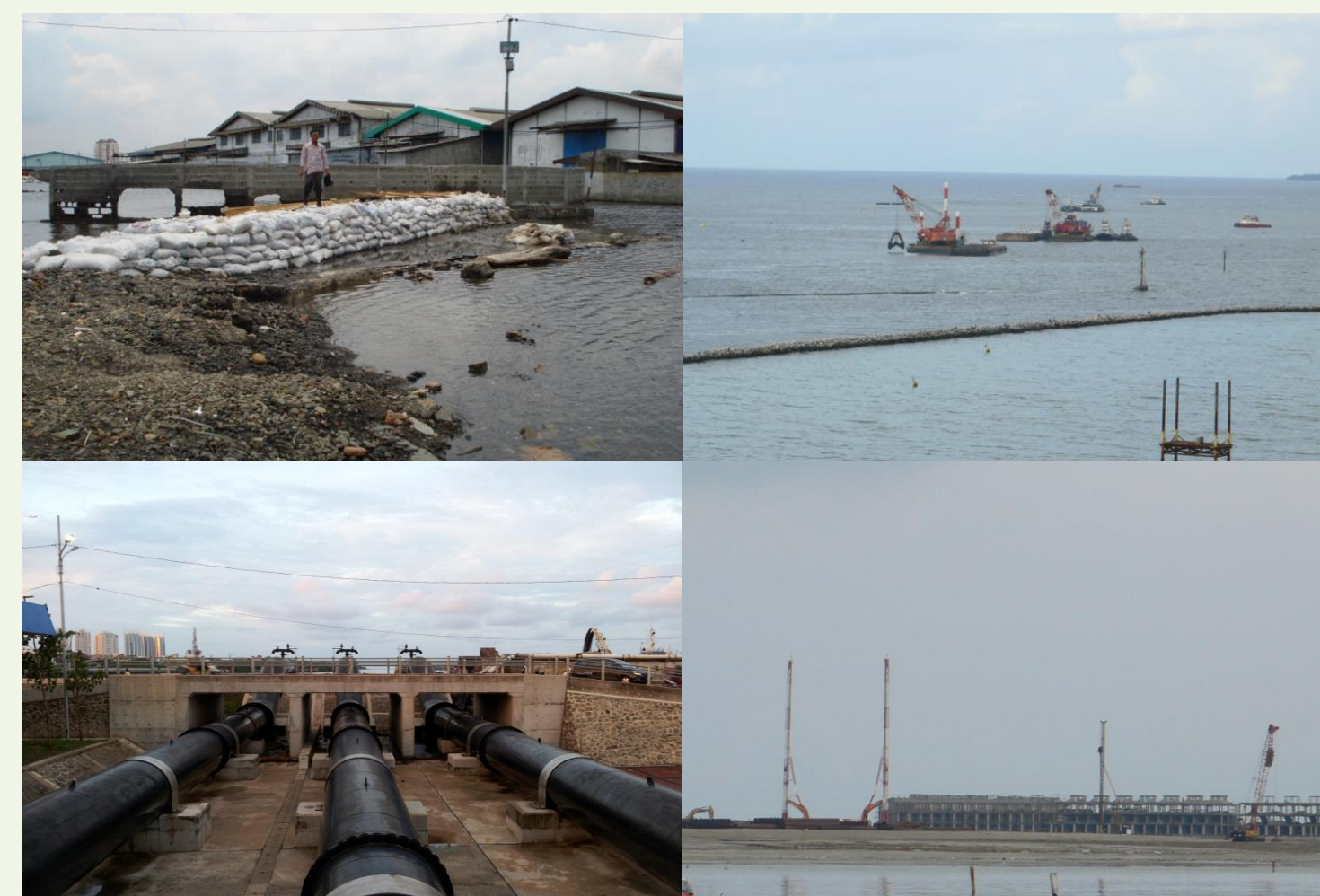


Practices:

- Seawall construction, Dykes
- Dredging/Pumps
- Living with & off floods/moving
- Artificial reefs & water breaks
- Land reclamation

Policies:

- Adaptation frameworks
- Flood insurance policies
- Groundwater mining regulations
- Early warning mechanisms
- Slum resettlements & gated real estate investments



References:

Behrends, A. et al. (eds.) (2014) "Traveling Models in African Conflict Management", Translating Technologies of Social Ordering, Leiden & Boston: Brill
Keller, R. (2011a) *Wissenssoziologische Diskursanalyse. Grundlegung eines Forschungsprogramms*, Wiesbaden: VS Verlag
Keller, R. (2011b) "The Sociology of Knowledge Approach to Discourse (SKAD)", Human Studies, 34, 43-65
Knohlbauch, H. (1995) *Kommunikationskultur. Die kommunikative Konstruktion kultureller Kontexte*, Berlin & New York: Walter de Gruyter
Kraas, F. and Mertins, G. (2014) "Megacities and Global Change", in: Kraas, F. et al. (eds.) *Megacities – Our global urban future*, Heidelberg: Springer, 1-6
McCann, E. (2011) "Urban policy mobilities and global circuits of knowledge: Toward a research agenda", Annals of the Association of American Geographers, 101(1), 107-130

Why Jakarta, Singapore and Manila?

Sea level rise, further exacerbated by the **El Niño-Southern Oscillation Phenomenon**, is especially felt in the **Island nations of the Tropics** – and in particular in **coastal Megacities** such as **Jakarta and Manila** (*Kraas and Mertins 2014*).

In the processes of translation and contestation, **Singapore** in addition acts as **epistemic hub** and **idea incubator**, but also as a **powerful, interest-driven player** in the region.

Conceptual Underpinnings

Communicative & Discursive Constructivism (Keller 2011a, 2011b; Knoblauch 1995; Reichertz 2010)

- **Practices:** conventionalised patterns of action, based on collective stocks of knowledge about the 'proper' way of acting
- **Dispositifs:** infrastructures (i.e. policies) of discourse production and infrastructures emerging out of a discourse
- **Translations, Contestations & Social Learning** (*Pahl-Wostl 2009; Siebenhüner 2008*) = discursive battles as part of power/knowledge complexes

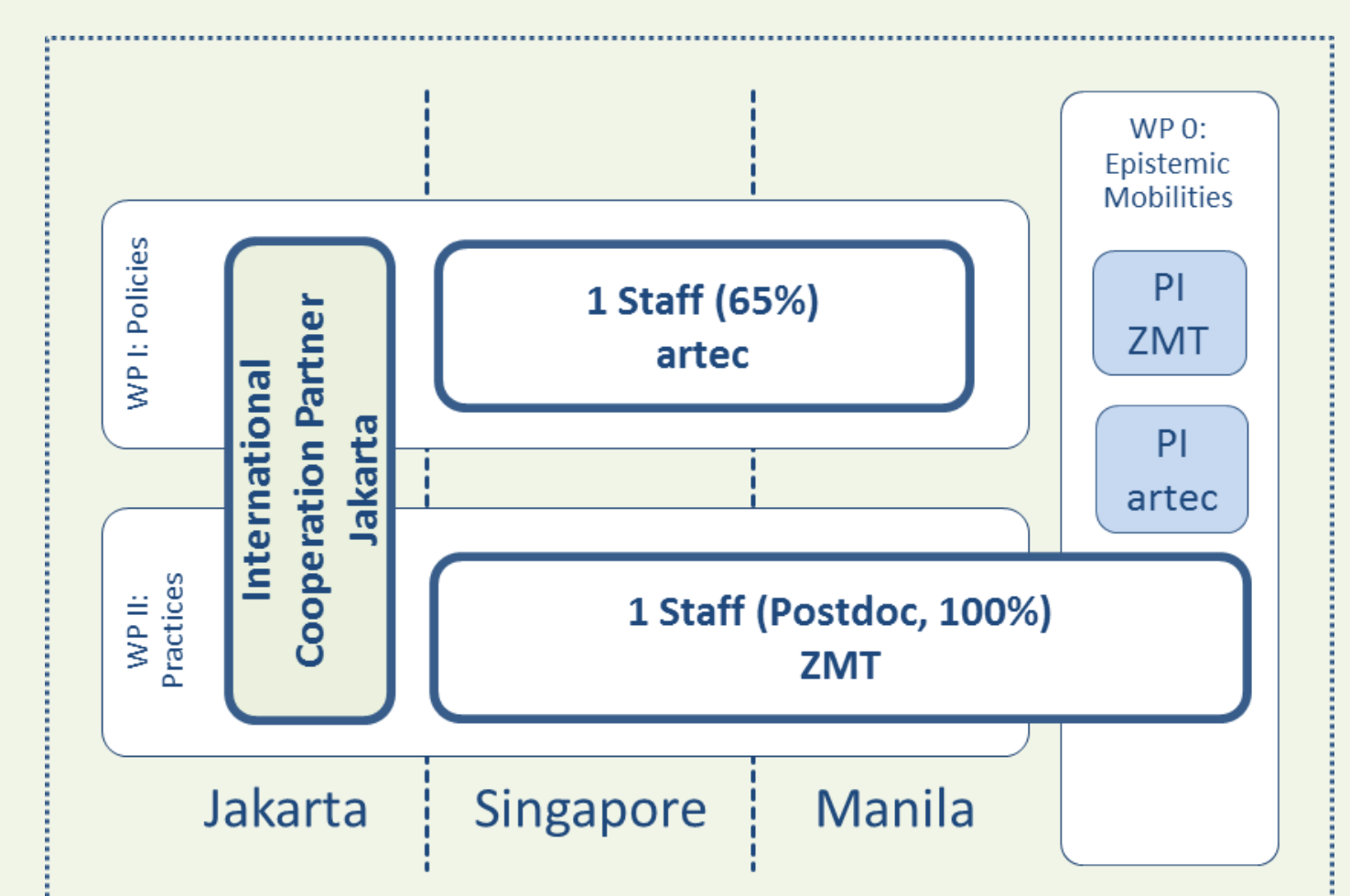
Travelling Models and Policy Mobilities *(Behrends et al. 2014; Rottenburg 1996; McCann 2011, 2013; Müller-Mahn 2013)*

- **Diffusion/transfer:** intercultural translation, co-creating their own vocabularies, networks & tacit knowledges
- **Co-production** of policies, political spaces & legitimacies for transformation

Project Implementation

Project Structure & Task Division

- Collaborative research with **long-standing partners** in Jakarta, Manila and Singapore
- Collaboration with projects in Work Program C foreseen



Workplan, Milestones & Deliverables

		PY I		PY II				PY III			PY IV		
		Q1	Q2	Q3	Q4	Q5	Q6	Q7	Q8	Q9	Q10	Q11	Q12
WG 0: Epistemic Mobilities (Hornidge/ Filterner)	B	WS		JP		PW		WS			JP	DA	BV
	B	WS					JP	WS				DA	BV
WG I: Policies (Filterner)	S	WS						WS				JP	BV
	J	WS				PW	JP	WS					BV
	M	WS						WS				JP	BV
WG II: Practices (Hornidge)	B	WS						WS				JP	DA
	S										JP		BV
	J	WS				PW		WS				JP	BV
	M	WS						WS			JP		BV

LEGEND:

Milestones	Deliverables
<div></div> Desktop literature review	WS Working-level Workshop
<div></div> Fieldwork in Singapore	PW Local Partner Workshop
<div></div> Fieldwork in Manila	JP Joint Peer-reviewed Publication
<div></div> Fieldwork in Jakarta	DA Data fed into open access repository
<div></div> Data coding (MAXQDA)	BV Edited book volume
<div></div> Data analysis & Writing	
<div></div> Stakeholder engagement	

Methods:

- **Qualitative ethnographic research** (interviews, participant observation – local language skills & regional expertise exist)
- **Tracing policies and practices: follow-the-moving-target methodologies**
- **Policy & document analysis** based on Sociology of Knowledge Approach to Discourse (SKAD)

McCann, E. (2013) "Policy Boosterism, Policy Mobilities, and the Extrospective City", *Urban Geography*, 34(1): 5-29

Müller-Mahn, D. (2013) *The Spatial Dimension of Risk: How Geography Shapes the Emergence of Risks*, Abingdon: Routledge

Pahl-Wostl, C. (2009) "A conceptual framework for analysing adaptive capacity and multi-level learning processes in resource governance regimes", *Global Environmental Change*, 19, 354-365

Reichert, J. (2010) *Kommunikationsmacht. Was ist Kommunikation und was vermag sie? Und weshalb vermag sie das?*, Wiesbaden: VS Verlag

Rortenberg, R. (1996) "When organization travels: On intercultural translation", in: Czarniawska, B. and Sevón, G. (eds.), *Translating organizational change*, Berlin & New York: Walter de Gruyter

Siebenhüner, B. (2008) "Learning in International Organizations in Global Environmental Governance", *Global Environmental Politics*, 8(4), 92-116